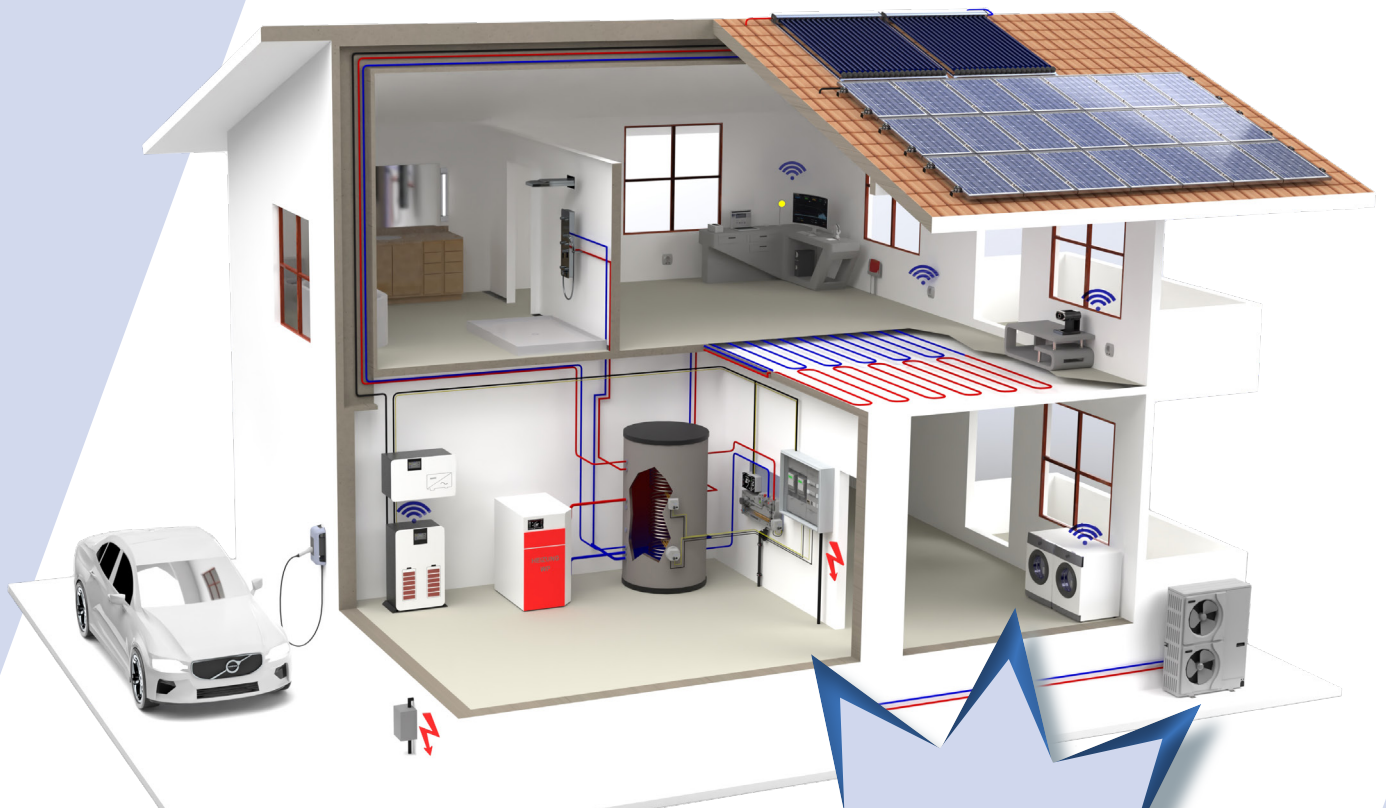


ASKOMA we care about energy



ASKOHOME+ is available for testing free of charge in the Play and App Store with a demo login.

Top Features
Extensive visualisation
Device prioritisation
48h energy yield forecast

ASKOFAMILY+ EVERYTHING REQUIRED FOR SURPLUS PV POWER STORAGE



- **ASKOHEAT+ 2.0** Screw-in and flange heater
- **ASKOWALL+ 2.0** Wall console ready to connect
- **ASKOSET+** Energy meter and energy manager
- **ASKOHOME+** app

THE ASKOHEAT+ 2.0 IS USED WITH THE ASKOSET+



The **ASKOHEAT+ 2.0** converts your electricity surplus from the PV system, wind turbine, water turbine or CHP into heat and stores it in your buffer tank / boiler in the house. This heat is then available when needed. The whole thing is easy to install thanks to the finished cable connector system.

The heating element can be controlled via LAN, Modbus TCP / RTU, REST API JSON and 0-10V.



The **ASKOHEAT+ 2.0** flange and screw-in heaters are produced as Incoloy 825 versions, suitable for a simple direct mounting in all heating and drinking water tanks.



Thanks to the insulated construction and the dip switch, they can be used in black steel, enamelled as well as stainless steel tanks. This solves the problem of corrosion with regard to the different storage materials.



The display of the remote control housing shows the device status, the temperatures and the IP address of the heating element.

The following plugs can be easily connected:

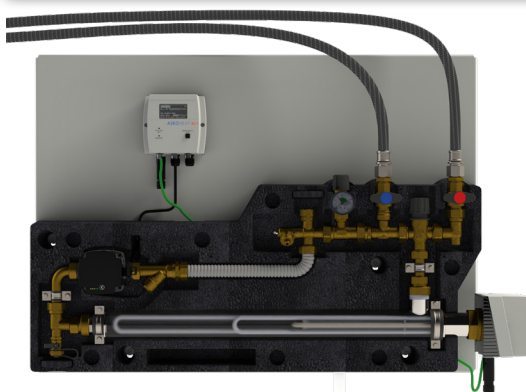
- RJ 12 – connection to the **ASKOHEAT+ 2.0**
- RS485/Modbus RTU
- LAN/Modbus TCP
- X2 for 0-10V and heat pump request
- X3 for 4 PT 1000 sensors

The **ASKOSET+** consists of an ASKOMMA energy manager with power supplies and optionally of an energy meter. The energy manager with the power supplies can be mounted on a DIN rail in a junction box, and the energy meter can be mounted on the house node (fuse box).



The **ASKOHOM+** app is a product for the visualisation and optimisation of self-produced electricity from a photovoltaic system. The annual fee for use is included in the purchase price for the first year. From the second year onwards, the use of the app is subject to a charge and will also be charged via the app. The app offers the PV owner the following functionalities:

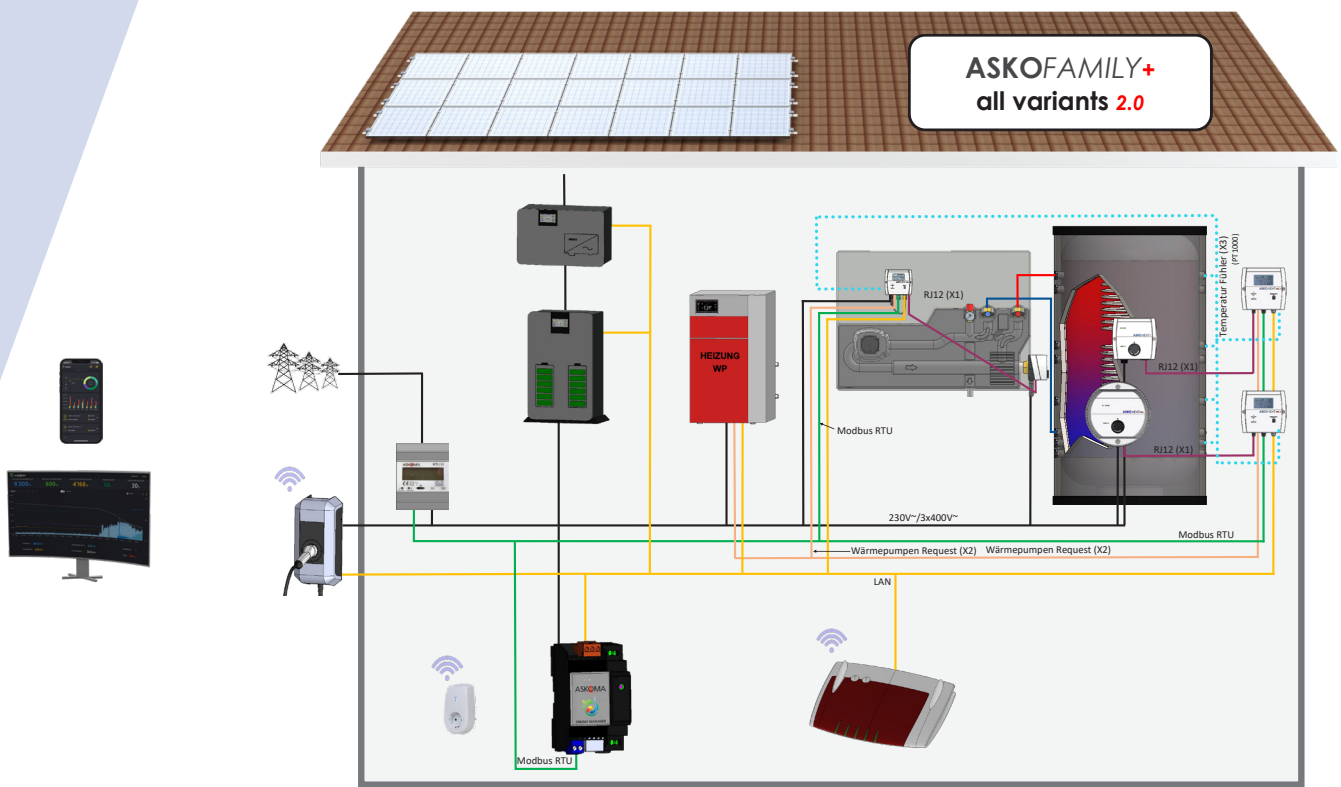
- Clear dashboard with the most important key figures of the PV system
- Visual representation of the energy flows including **ASKOHEAT+ 2.0**
- Several **ASKOHEAT+ 2.0** can be controlled and prioritised
- Quick overview of the last 7 days of production, self-consumption and grid purchases
- Detailed daily, monthly and yearly views, degree of self-sufficiency, etc.
- Setting the prioritisation of the connected devices
- Etc.



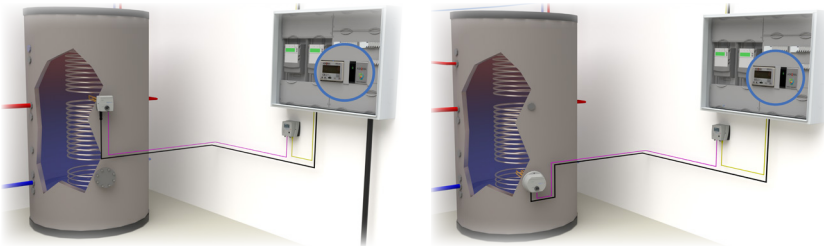
If you use the **ASKOWALL+ 2.0** the energy manager and power supplies, as well as the energy meter are mounted at the house node.

The **ASKOWALL+ 2.0** is designed for easy installation on any conventional heating buffer tank in order to generate energy-efficient, gentle high-temperature stratification for the user. For this purpose, the **ASKOWALL+ 2.0** can be connected directly to the respective heating buffer tank.

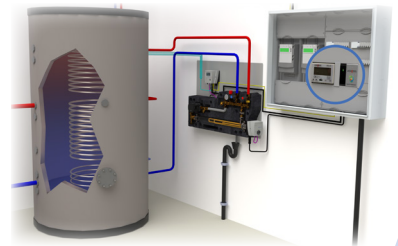
DEVICE VARIANTS



ASKOHEAT+ 2.0 screw-in or flanged heater, with **remote control** together with **ASKOSET+**.



ASKOWALL+ 2.0 incl. **ASKOHEAT+ 2.0** screw-in heater together with **ASKOSET+**.




Targeted increase in self-consumption through prioritisation and control:

- Heat pump
- Inverter
- Battery storage
- Car charging station
- Car charging system
- Bidirectional charging station
- Energy measurement
- Smart plug
- Several **ASKOHEAT+ 2.0**
- up to 99 devices

All supported devices for our software package can be found here:



ORDER OPTIONS

	Order no.	Appellation	Description	Immersion length mm	Use
1.1. Screw-in heater ASKOHEAT+ 2.0, 7 and 3 levels, 230V / 400V					
	012-6801	AHIR-TI-plus-1.75	ASKOHEAT+ 2.0, 7 levels, 230V / 400V, 1.75kW	400	Wall/Tank
	012-6802	AHIR-TI-plus-3.5	ASKOHEAT+ 2.0, 7 levels, 400V, 3.5kW	600	Wall/Tank
	012-6803	AHIR-TI-plus-4.4	ASKOHEAT+ 2.0, 7 levels, 400V, 4.4kW	700	Wall/Tank
	012-6804	AHIR-TI-plus-5.2	ASKOHEAT+ 2.0, 7 levels, 400V, 5.2kW	750	Wall/Tank
	012-6811	AHIR-TI-plus-7.5	ASKOHEAT+ 2.0, 3 levels, 400V, 7.5kW	700	Wall/Tank
	012-6812	AHIR-TI-plus-9.0	ASKOHEAT+ 2.0, 3 levels, 400V, 9.0kW	750	Wall/Tank
1.2. Flange heater ASKOHEAT-F+ 2.0, Ø 180mm, 7 and 3 levels, 230V / 400V					
	012-6821	AHF180-TI-plus-1.75	ASKOHEAT-F+ 2.0, 7 levels, 230V / 400V, 1.75kW	260	Tank
	012-6822	AHF180-TI-plus-3.5	ASKOHEAT-F+ 2.0, 7 levels, 400V, 3.5kW	360	Tank
	012-6823	AHF180-TI-plus-4.4	ASKOHEAT-F+ 2.0, 7 levels, 400V, 4.4kW	420	Tank
	012-6824	AHF180-TI-plus-5.8	ASKOHEAT-F+ 2.0, 7 levels, 400V, 5.8kW	540	Tank
	012-6831	AHF180-TI-plus-7.5	ASKOHEAT-F+ 2.0, 3 levels, 400V, 7.5kW	420	Tank
	012-6832	AHF180-TI-plus-9.0	ASKOHEAT-F+ 2.0, 3 levels, 400V, 9.0kW	490	Tank
1.3. Flange heater ASKOHEAT-F+ 2.0, Ø 240mm, 6 and 19 levels, 400V					
	012-6841	AHF240-TI-plus-10.0	ASKOHEAT-F+ 2.0, 6 levels, 400V, 10.0kW	300	Tank
	012-6842	AHF240-TI-plus-15.0	ASKOHEAT-F+ 2.0, 6 levels, 400V, 15.0kW	420	Tank
	012-6843	AHF240-TI-plus-20.0	ASKOHEAT-F+ 2.0, 6 levels, 400V, 20.0kW	540	Tank
	012-6851	AHF240-TI-plus-9.5	ASKOHEAT-F+ 2.0, 19 levels, 400V, 9.5kW	360	Tank
	012-6852	AHF240-TI-plus-11.9	ASKOHEAT-F+ 2.0, 19 levels, 400V, 11.9kW	420	Tank
	012-6853	AHF240-TI-plus-15.8	ASKOHEAT-F+ 2.0, 19 levels, 400V, 15.8kW	540	Tank
1.4. Flange heater ASKOHEAT-F+ 2.0, Ø 280mm, 6 and 19 levels, 400V					
	012-6861	AHF280-TI-plus-10.0	ASKOHEAT-F+ 2.0, 6 levels, 400V, 10.0kW	300	Tank
	012-6862	AHF280-TI-plus-15.0	ASKOHEAT-F+ 2.0, 6 levels, 400V, 15.0kW	420	Tank
	012-6863	AHF280-TI-plus-20.0	ASKOHEAT-F+ 2.0, 6 levels, 400V, 20.0kW	540	Tank
	012-6871	AHF280-TI-plus-9.5	ASKOHEAT-F+ 2.0, 19 levels, 400V, 9.5kW	360	Tank
	012-6872	AHF280-TI-plus-11.9	ASKOHEAT-F+ 2.0, 19 levels, 400V, 11.9kW	420	Tank
	012-6873	AHF280-TI-plus-15.8	ASKOHEAT-F+ 2.0, 19 levels, 400V, 15.8kW	540	Tank
2.1. Temperature storage stratification					
	012-0128	ASKOSENSOR	Sensor set with 3x PT1000 sensors and junction box for ASKOHEAT+ 2.0 if used in tank		Tank
	012-0129	ASKOSENSOR	Sensor set with 4x PT1000 sensors for ASKOHEAT+ 2.0 to be attached on the ASKOWALL+ 2.0		Wall
3.1. ASKOWALL+ 2.0					
	012-2110	ASKOWALL+ 2.0	ASKOWALL+ 2.0 for heating water with connection for ASKOHEAT+ 2.0 according to choice of output. The remote control base is already fitted and equipped with pump relays. If an ASKOSET+ is included in the application, it must be installed in the customer's fuse box.		
	012-0130	ASKOHOSE	Two oxygen-tight OXYban connection hoses for flexible connection from the ASKOWALL to the buffer cylinder (length 1600 mm).		Wall
4.1. ASKOSET+					
	012-2275	ASKOSET+	Includes energy manager incl. software and cloud usage for one year and a 24V power supply unit (if bidirectional energy meter is available on site from SmartMeter list). End customer app is charged from the 2nd year upwards. Annual fee: CHF 44.-- / € 48.--	1300x700	Wall/Tank
	012-2280	ASKOSET+	Includes bidirectional meter, energy manager incl. software and cloud usage for one year and a 24V power supply unit. A possible extension tool would be a second SmartMeter for displaying PV production and energy usage if the inverter cannot be read. End customer app is charged from the 2nd year upwards. Annual fee: BASIC CHF 44.-- / € 48.-- / PREMIUM CHF 66.-- / € 72.--		Wall